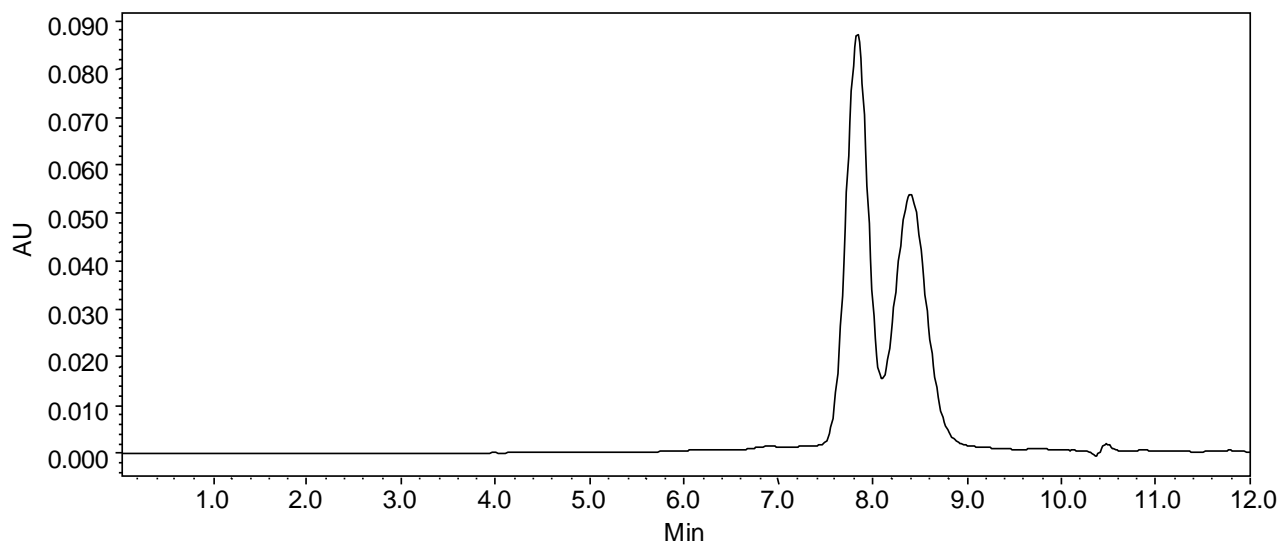




Analysis of 5kD and 8kD Peptides by Zenix™ SEC-150



Column: Zenix™ SEC-150 (3 μm , 150 \AA , 7.8x300 mm)
Mobile Phase: 150 mM Phosphate Buffer, pH 7.0;
Flow Rate: 1.0 mL/min
Temperature: Ambient
Detection: UV 220 nm
Injection Volume: 10 μL
Sample: Salcatonin-type peptide mixture with MW of 8 kD and 5kD

Keywords: Size exclusion, Zenix, peptide, salcatonin