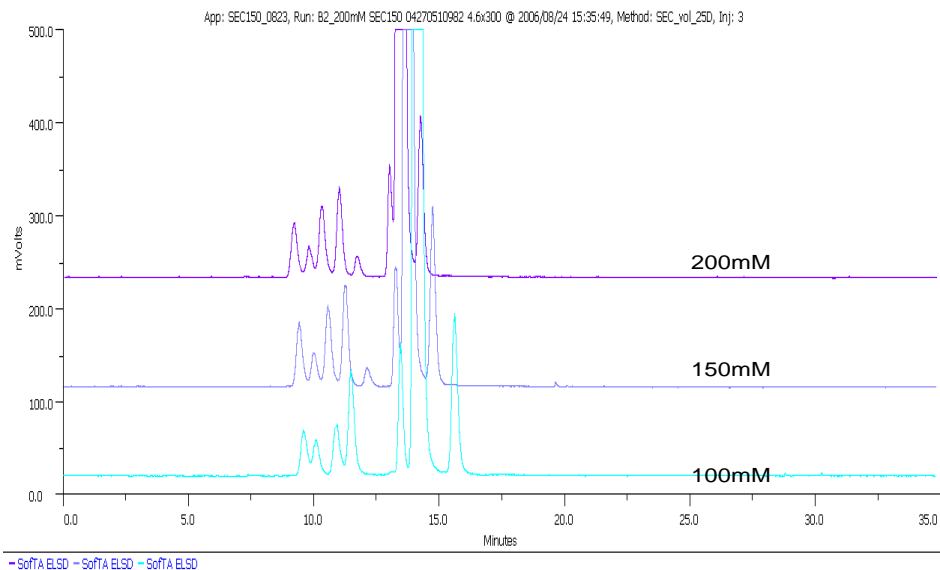




Protein Separation in Organic Buffer



Column: SRT[®] SEC-150 (5 μ m, 150 \AA , 4.6 x 300 mm)
Mobile Phase: 100 – 200 mM $\text{CH}_3\text{COONH}_4/\text{CH}_3\text{CN}$, pH 6.3
Flow Rate: 0.25 mL/min
Detection: SofTA ELSD
Sample: Molecular weight marker proteins, horse serum
(Courtesy of Miyako Kawakatsu, M&S Instruments Inc)

Keywords: size exclusion, SRT, proteins, volatile buffer, organic solvent