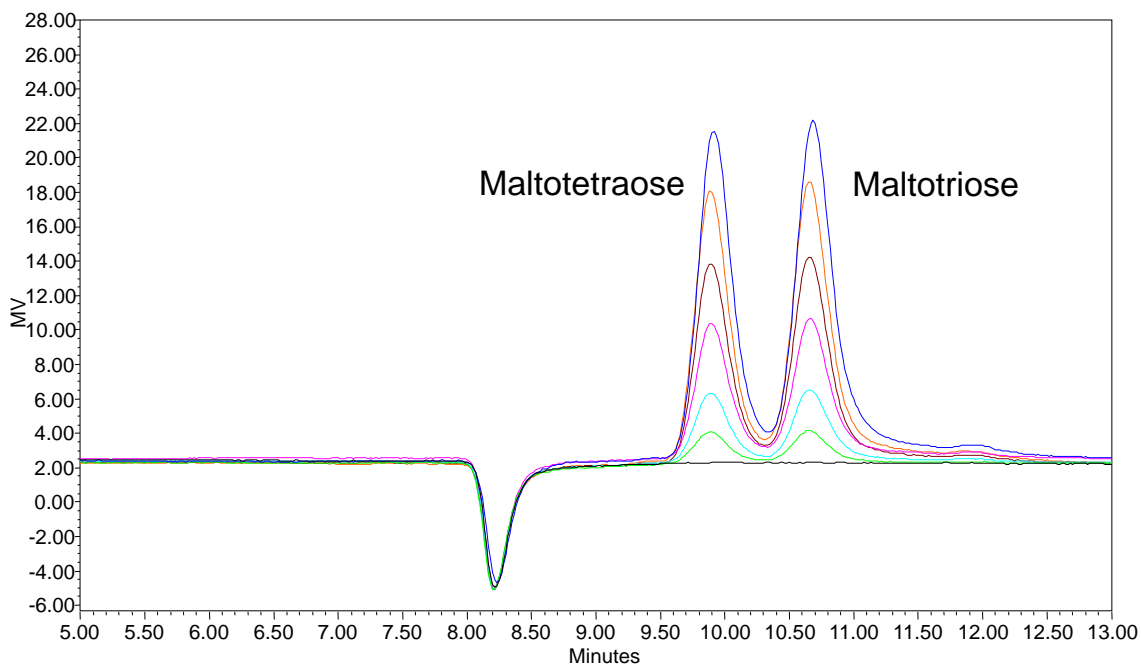




Analysis of Maltotriose and Maltotetraose on Carbomix[®] H-NP10 (10 μ m, 5%, 7.8x300 mm)



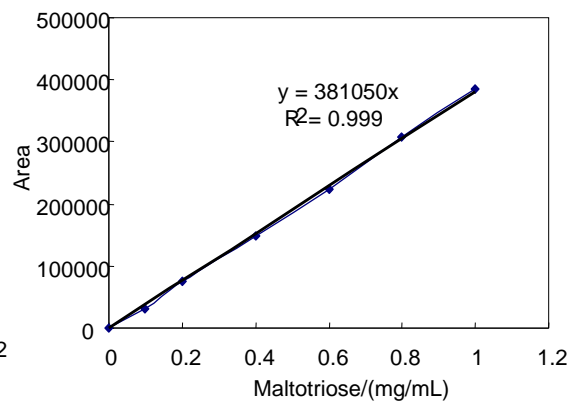
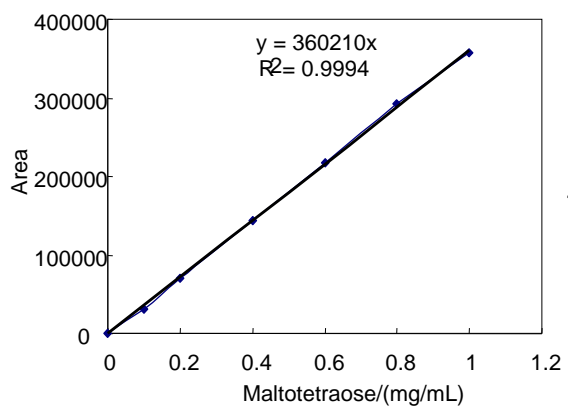
Column: Carbomix[®] H-NP10:5% (7.8*300 mm)
Mobile Phase: 2.5 mM H₂SO₄
Flow Rate: 0.5 mL/min
Temperature: 55 °C
Detection: RI
Injection Volume: 20 μ L
Samples: Maltotriose and Maltotetraose (0.1, 0.2, 0.4, 0.6 and 0.8 mg/ml in water)

Calibration standard curve on Page 2



Maltotetraose/(mg/mL)	0.0	0.1	0.2	0.4	0.6	0.8	1.0
Area	0	30677	70406	144197	217613	292733	356482

Maltotriose/(mg/mL)	0.0	0.1	0.2	0.4	0.6	0.8	1.0
Area	0	30614	74714	148368	223655	308321	383919



Keywords: Carbohydrate, Carbomix, hydrogen form, RI, sugar mixture, maltotetraose, maltotriose