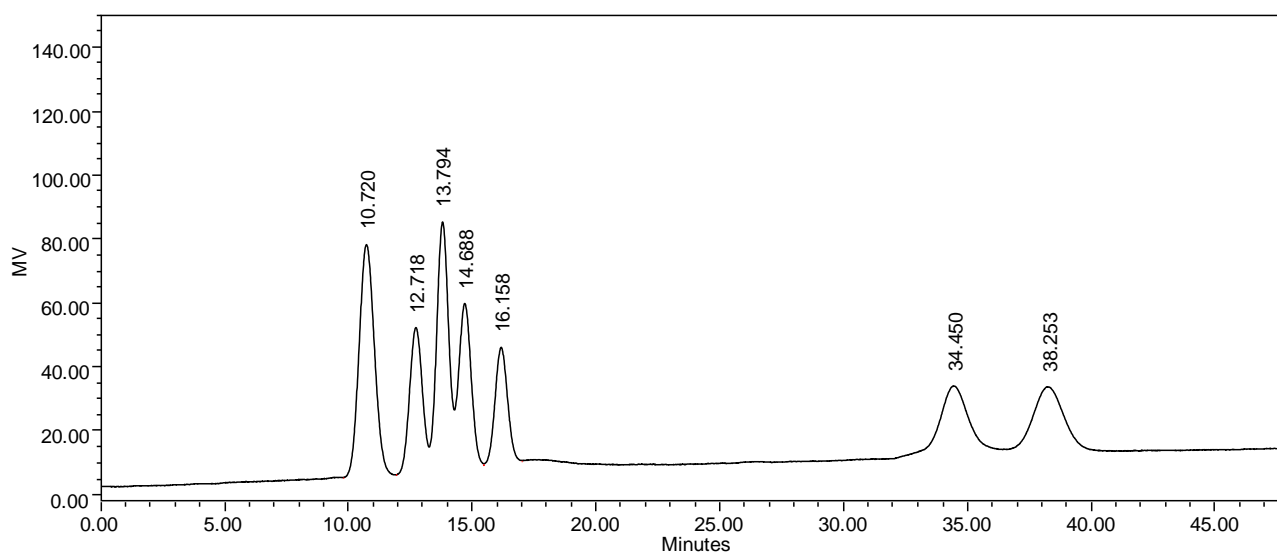


**Analysis of Sugar Mixture on Carbomix<sup>®</sup>-Pb (10  $\mu$ m, 8%, 7.8x300 mm)**

Column: Carbomix Pb<sup>®</sup>-NP10 (10  $\mu$ m, 8% crosslinkage, 7.8x300 mm)  
Mobile Phase: water  
Temperature: 80 °C  
Flow Rate: 0.6 mL/min  
Detection: RI  
Sample Injection: 10  $\mu$ L  
Samples: Cellobiose, Glucose, Xylose, Galactose, Arabinose, Xylitol, Sorbitol

Keywords: Carbohydrate, Carbomix, lead form, Xylose, Galactose, Arabinose